

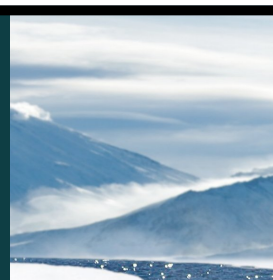


CLIMATE ACTIONS

Market Harbourough Climate Action Group

(a part of Sustainable Harbourough Community – an unincorporated not-for-profit Association)

Climate breakdown is accelerating and bringing with it rapidly growing threats to populations across the globe. HDC has committed to the aim to reduce carbon emissions by 2030 and we would like to suggest the following actions.



HDC needs to find ways of supporting, challenging and measuring their behaviour regarding climate change

Continue to assess your carbon footprint.

Make the transition to electric and low emissions vehicles.

Seek to buy only from businesses that can show that they are working actively to reduce their CO2 emissions.

Continue to review of the energy efficiency of your buildings and using green energy suppliers.

Make low carbon transport a priority for waste recycling collection, building maintenance, construction and general supplies.

Explore opportunities to generate income from waste - e.g. composting, remanufacture and recycling.

As a group we would like to know more about how HDC is working with Leicestershire County Council and other local authorities to coordinate communication with national government including:

Linking up with UK100 and its campaign to ensure that local councils are supported with sufficient investment.

Lobbying MPs to get their support for local initiatives to make green investments and stop investing in fossil fuels.

Work with bodies that can offer advice and guidance on climate change initiatives such as Carbon Trust, The UK Green Building Council.



Local councils can play a crucial role in mobilising public support for the move to zero carbon

Help the public access information on making their homes and businesses more energy efficient by providing a central guide for accessing grants.

Provide the local community with a list of accredited business i.e. green builders and promote local green businesses.

Encourage community sharing. Introduce a 'library of things' where residents can borrow goods.

Facilitate the provision of workshops and training courses for SMEs in particular, switching to green energy suppliers, improving their supply chain management to help reduce transport emissions and cut waste.

Support a youth forum to help deliver the HDC plan.



Manage Council Land

Work closely with the agricultural community, encouraging a reassessment of land use patterns (in line with the new Environmental Land Management Scheme).

Take action to restore biodiversity, for example, by reducing grass and hedge cutting and advertising peat free compost.

Work with Welland River Trust, The Wildlife Trust and Harbourough Woodland Community Volunteers to plant more trees and improve flood management.

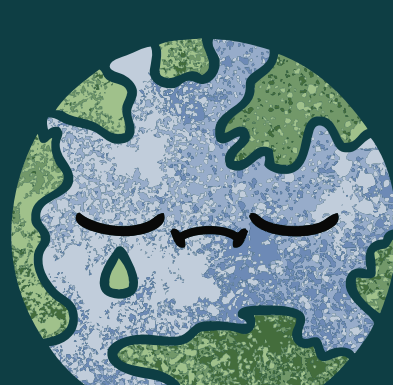
Re-imagine public transport so that it is more flexible in meeting users' needs

Provide electric buses and minibuses.

Low cost/free parking for electric vehicles.

Redesign car parks to allow space for EV charging and bike storage.

Introduce a scheme whereby residents can trade in their car for mobility vouchers for public transport and car hire.



Improve local infrastructure so cyclists feel safer on the roads, in and around town centres and on country roads.

Make the town centre traffic free.

Introduce work place parking levies.

Support local cycling groups in providing lessons.

Practical steps to legislate and ensure that new and upgrading developments include the very best standards and applications for energy efficiency

• Create a housing development checklist for developers to follow.

• Improve insulation on existing housing stock.

• Generate energy on site with renewable energy (especially solar heat, ground source heat pumps and electricity on buildings and other renewables, especially biofuels, in local agriculture).

• Rainwater collection for flushing toilets, cleaning and gardens should be mandatory.

• Orientation of buildings with respect to solar heating is vital.

• Provision of allotments at housing developments of more than, say, 10 houses should be mandatory.



We are eager to talk with HDC councillors and officers about how we can support HDC in its efforts to take such action in the interests of Harbourough District and its people.

We would like to broaden the membership of the Climate Action Working Group to include representatives from key groups, or even consider setting up some sort of 'Citizens Assembly' which has been used very successfully by other councils.